

MULCAHY MINUTE

New Line!

Volume 6, Issue 3
July 2005



MULCAHY CO. REPS PURE HUMIDIFIER

BJ Mulcahy Company is proud to announce that we are the upper Midwest manufacturer representative for the Pure Humidifier Company. Pure manufactures a complete line of high quality steam humidifiers that can utilize a wide variety of energy and water sources to satisfy any humidification requirement. Below is a brief overview of their product offering.

ES The ES series uses electricity as the energy source to create clean low pressure steam. It uses regular tap water, RO, or De-ionized water. It has a built in skimmer mechanism to keep mineral buildup to a minimum allowing many months of operation without maintenance. So unlike 'bottle type' units, the ES does not require a large amount of maintenance in order to remain in operation. The ES units are ETL Listed, constructed of stainless steel, and have capacities up to 306 lb/hr. Full modulation or On-Off controls are available depending on system requirements.

EC Model EC units, like the ES, use electricity as its energy source but is a wall hung unit. The EC can either feed its steam to a

dispersion tube in a duct or it can be supplied with an optional blower package to dump steam directly into a space. The EC is an excellent retrofit solution.

GX The GX series burns natural gas or propane to generate steam. It shares many of the features of the ES – such as ETL Listed, Stainless Steel Construction, Built in Skimming Mechanism, modulating or On-Off controls. The first main advantage of a gas fired unit over an electrical unit is the cost of operation. The other advantage that a gas fired unit offers is a small physical size. The GX series is available up to 900 lb/hr.

SX The SX series uses chemically laden boiler steam to generate low pressure clean steam for humidification. The SX units offer a unique solution for humidification for those with access to an existing steam system. Like Pure's other steam generators, the SX is ETL listed, is constructed of stainless steel, has a built in skimmer, and can be made to use a wide variety of water sources. Another aspect of the SX is its large capacity: up to 2,035 lb/hr. Typical applications are large institutional buildings such as hospitals and R&D facilities.

Dispersion Systems – This is the "end of the line" for steam humidification systems. Getting the clean steam into the air is the desired end result. Pure Humidifier makes several varieties of steam dispersion tubes that both insure complete absorption of the steam and also allow for easy installation. Dispersion tubes can either obtain steam directly from one of their generation systems or can tap into a central humidification steam system.

This has obviously been a brief overview of what Mulcahy Co. and Pure Humidifier have to offer for your next project. If you have any questions about or interest in these products, let us know and we'll be glad to assist you.



Free Lunch

We do onsite training on this new product line. To learn more please contact your salesperson or Tara (651-686-8580) to arrange a Mulcahy Co. sponsored lunch & learn at our facility or yours.

Looking for an alternative to electrically generated steam humidification? Concerned about using chemically treated boiler steam for direct humidification? If so, PURE's "GX" Series Gas Fired Humidifiers are exactly what you're looking for.

The "GX" Series Humidifier utilize a stainless steel heat exchanger, which allows for a gas power burner to be used as the energy source for producing steam from tap water.





B. J. MULCAHY COMPANY INC.
SPECIALIST IN HYDRONIC & STEAM

2700 Blue Water Road, Suite #100
Eagan Minnesota 55121

Phone: 651-686-8580
Fax: 651-686-8588
bjm@bjmulcahy.com

*Representing Quality Products With
Quality Engineering*

**We're on the web!!
www.bjmulcahy.com**



**For Use With
Condensing Boilers!**

DANFOSS CMB ZONE CONTROL PANEL

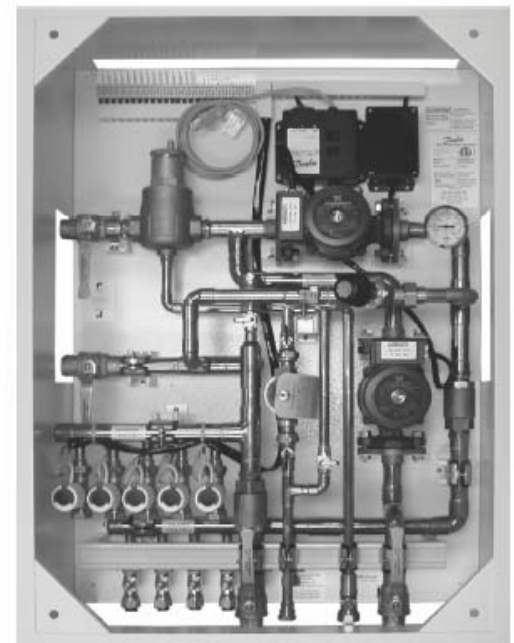
The CMB is designed specifically to work with today's condensing and modulating boilers. The CMB is capable of delivering 100 MBH. It bridges the gap between the heat source and the heat emitters, interfacing with the system operating controls that are integral to these high efficiency boilers. Available in 3, 4, and 5 low temperature circuits or zones. Each zone circuit can supply a remote manifold with up to (5) loops. Flow is controlled by a slow acting zone valve and activated by a factory supplied thermostat. A main circulator is supplied as well as a second circulator for Domestic Hot Water with a priority system. The CMB is equipped with a

terminal strip that is pre-wired to accept input signals from thermostats and a DHW aquastat. The terminal strip also provides connections for a heat or DHW signal to the boiler. The CMB also has an air eliminator, fill valve and expansion tank connection.

In addition to the CMB Danfoss offers:

- 30, 50, & 100 MBH panels
- Boiler flow panels
- Multi zone panels
- Snow melt panels
- Much, much more....
- **Call today!!!**

Panel is 26-1/8" x 13" x 36-1/8" (h)



We do onsite training - call Chud to set up a training session today on this product!